

PhD highlights poster, final EPI conference

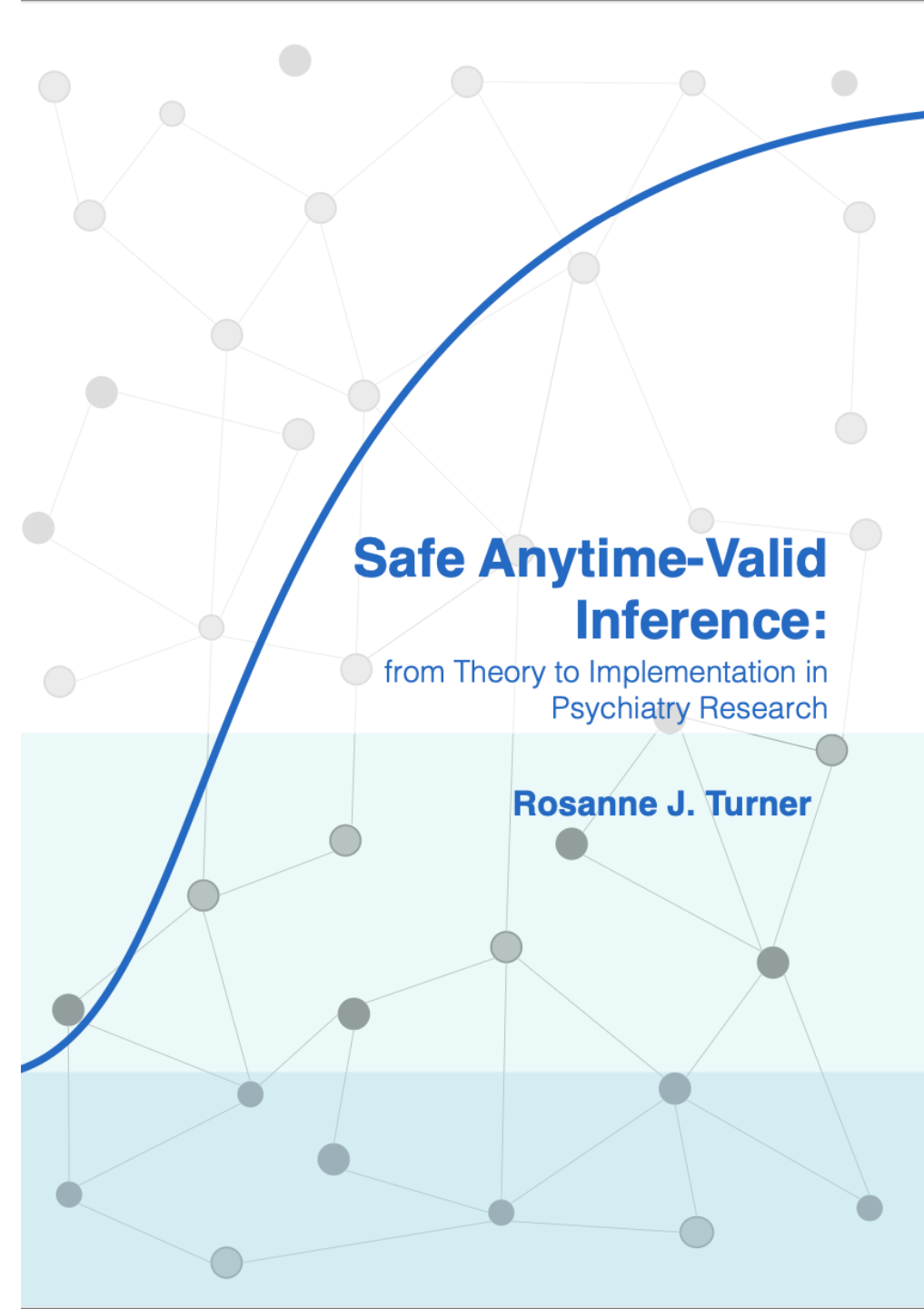
Dr. Rosanne J. Turner
Data Scientist PsyData UMC Utrecht/
coordinator AI Lab Healthy Living UMCU
and UU

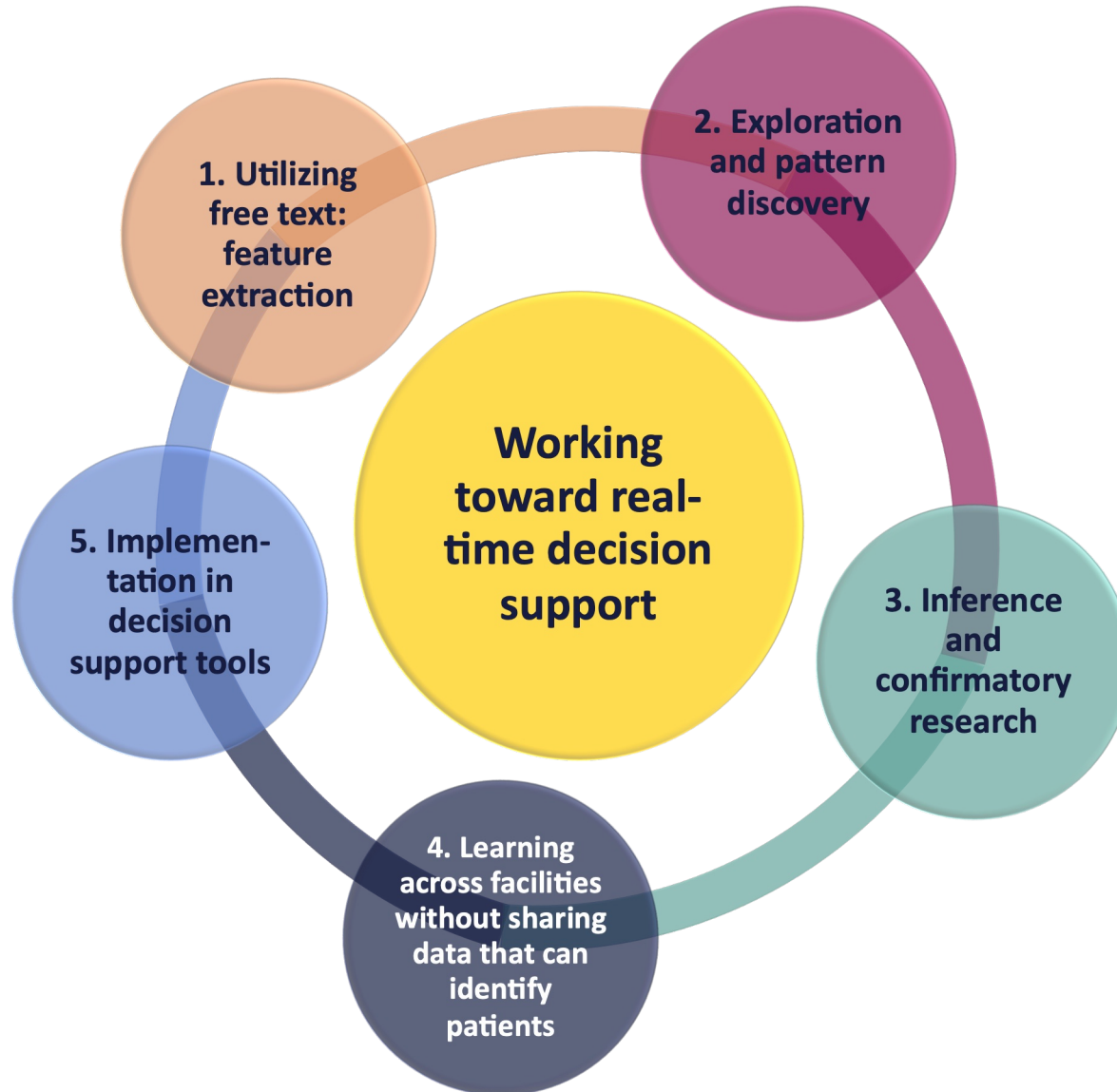


Work for this PhD project was
carried out at



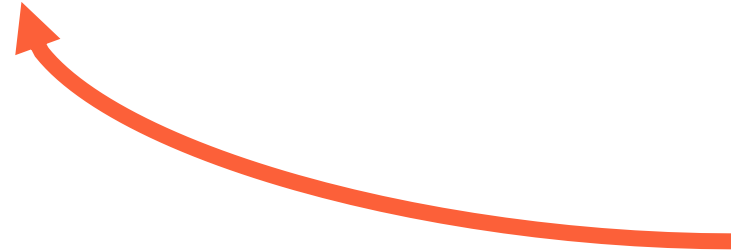
Centrum Wiskunde & Informatica



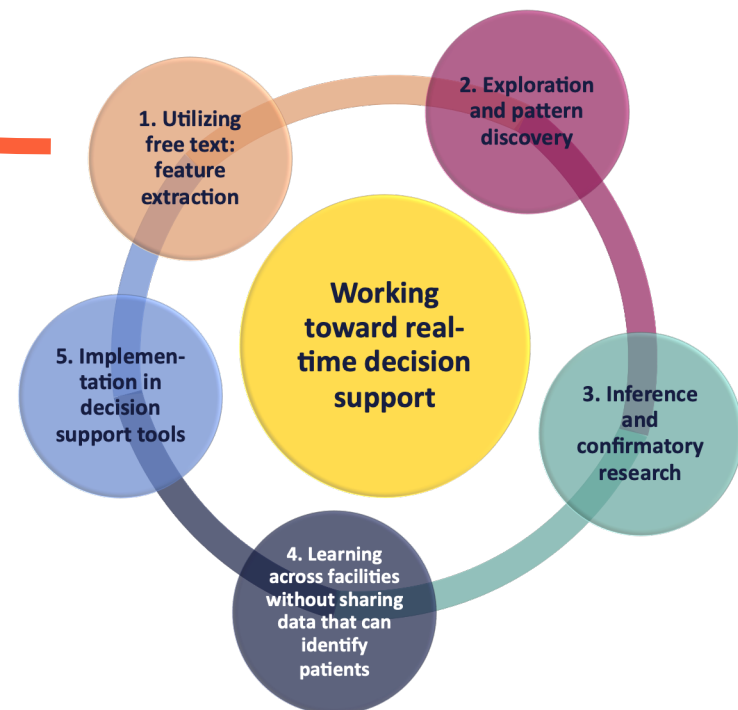


1. Feature extraction from routinely written clinical text

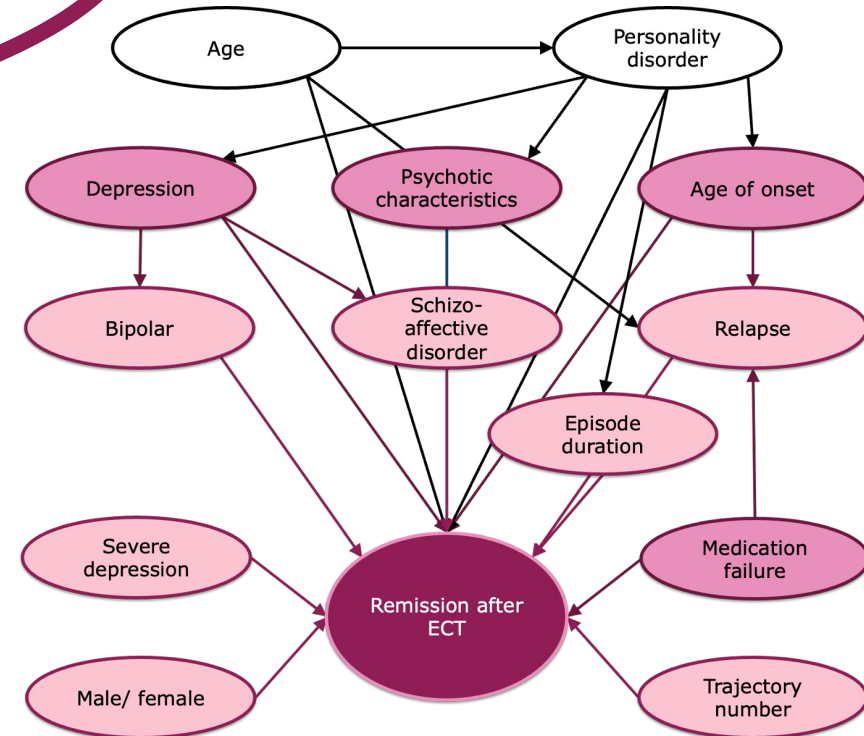
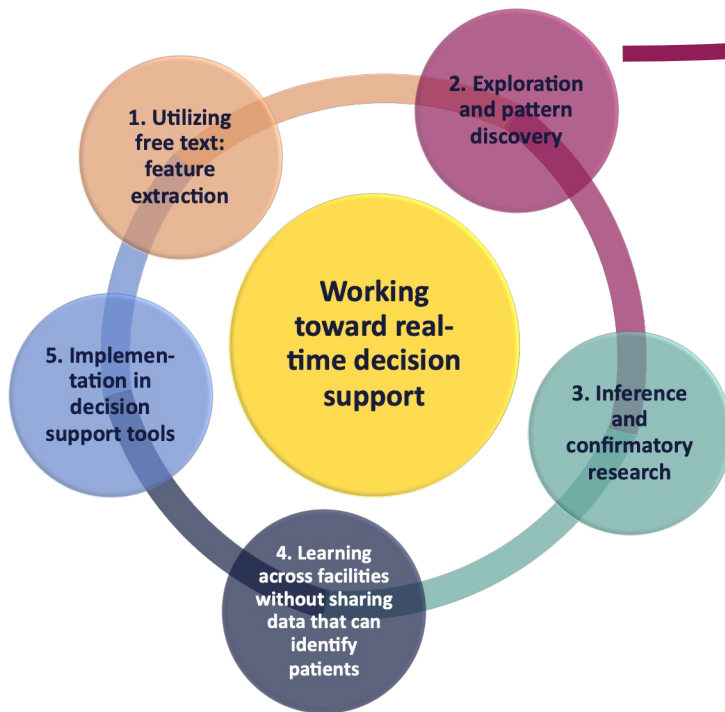
Tools: MedCAT, SpaCy, Prodigy, PsyNLP
(rule-based context detection)



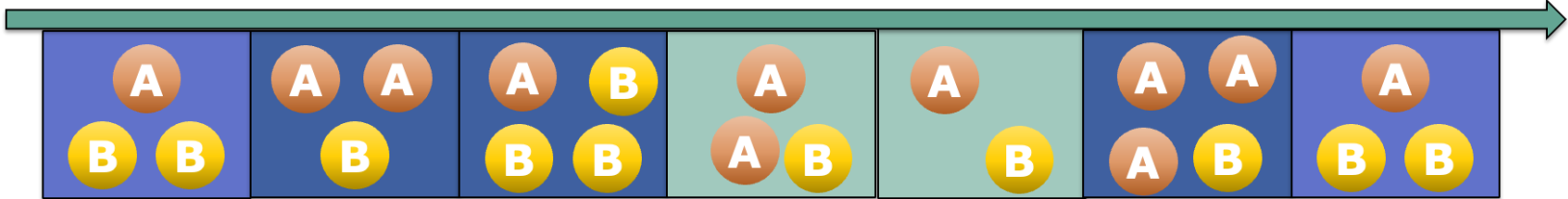
“Patient was admitted with *severe anxiety*”



2. Pattern discovery and exploration with network analysis

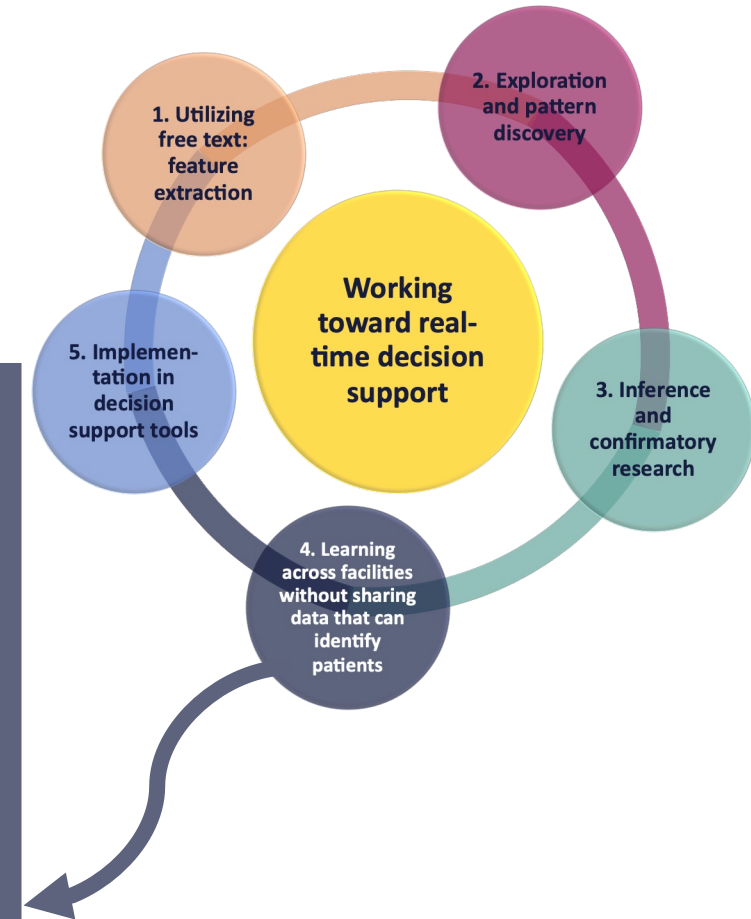


3. Inference and confirmatory research How to deal with (near) real-time study data?



4. Let algorithms visit data on separate locations and combine at central location.

One of my current goals as data scientist at PsyData UMCU: implement durable infrastructure for federated learning across multiple mental



5. Goal: from validation studies to implementation in routine clinical care

Current work at UMC Utrecht: decision

